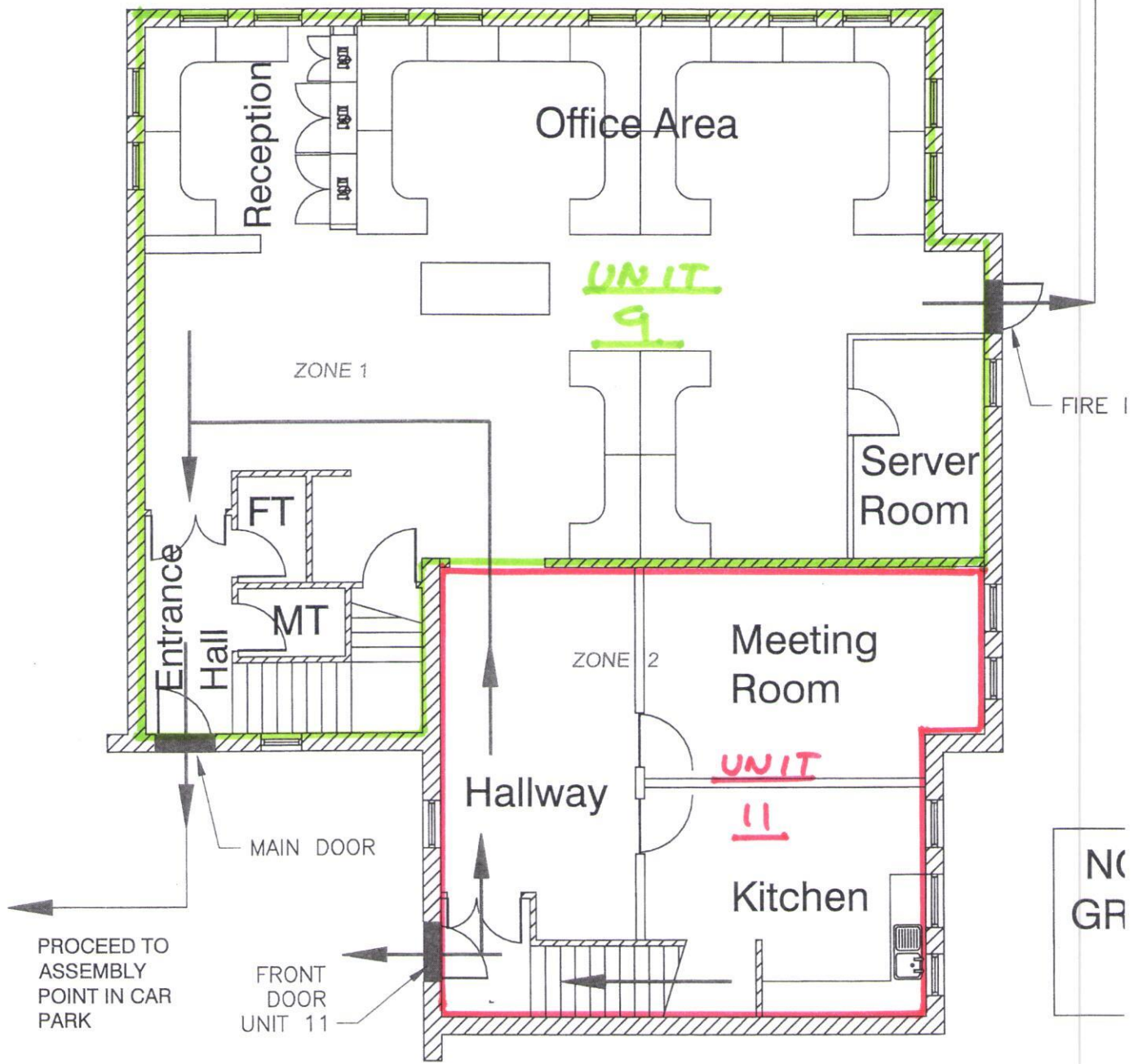


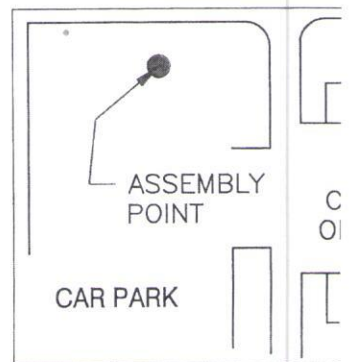
PROCEED TO ASSEMBLY POINT IN CAR PARK



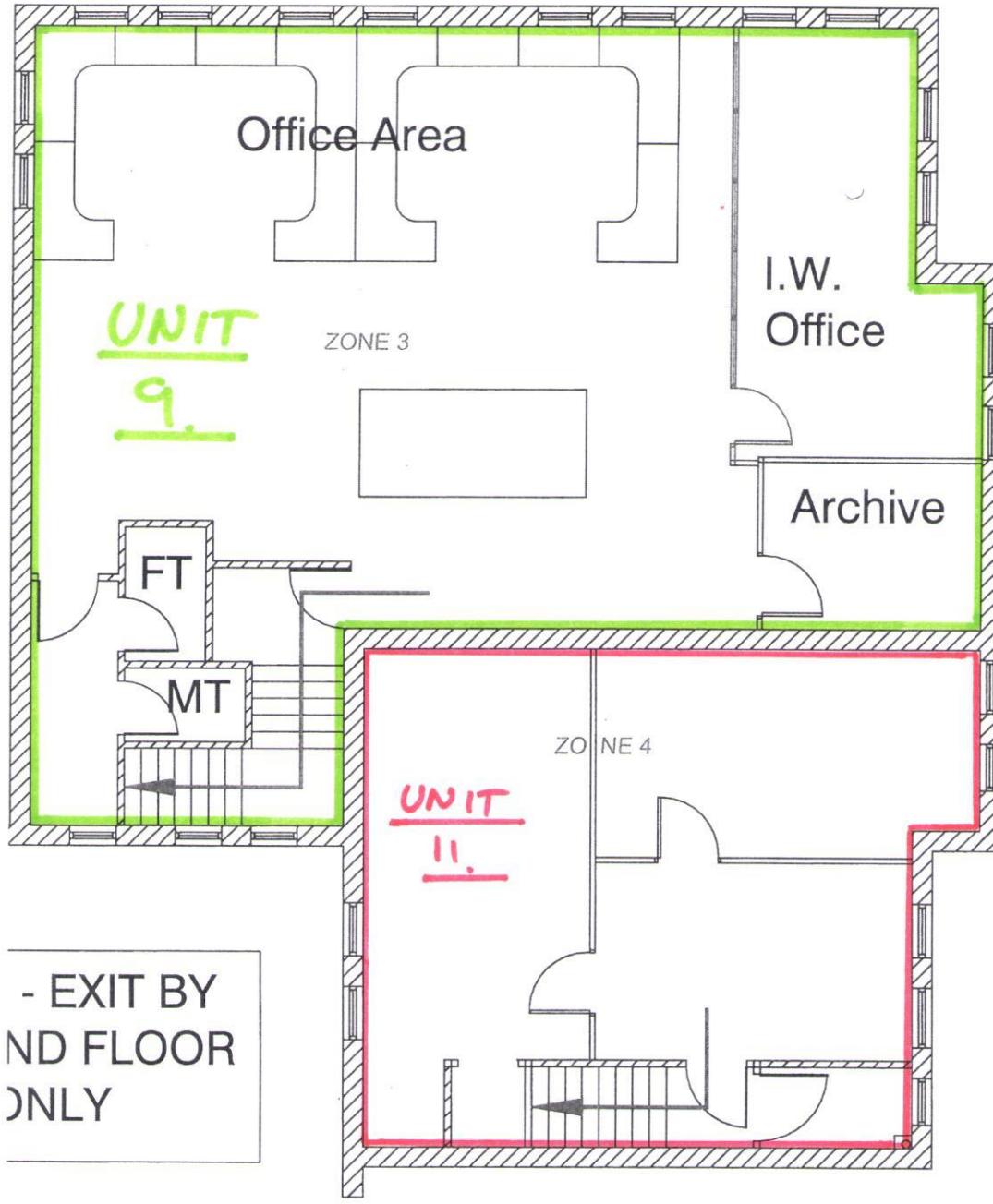
GROUND FLOOR

STAFF & VISITORS TO LEAVE BY NEAREST EXIT.

ALL TO CONGREGATE AT ASSEMBLY POINT IN UPPER CAR PARK

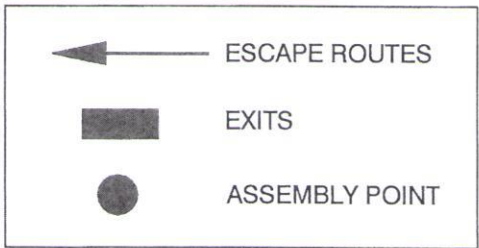
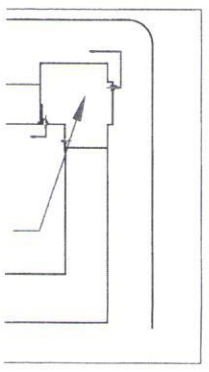



SITE PLAN (S)



- EXIT BY
ND FLOOR
ONLY

FIRST FLOOR



2	11.06.14	JU	Mds to No11 & Zones Added
1	23.07.13	JU	Room Ident text added
0	15.06.10	JU	1st Issue
Rev:	Date:	By:	Description:
ORIGINAL SHEET SIZE A1			
Drawing Status:			
Job Title:			
Drawing Title:			
HARROGATE OFFICE FIRE EXITS & ASSEMBLY POINTS			
 <small>A TETRA TECH COMPANY</small>			
<small>LJK Office:</small> Harrogate Manchester Reading Website		<small>T (+44) (0) 1423 878 130 F (+44) (0) 1423 878 131</small> <small>T (+44) (0) 161 499 6900 F (+44) (0) 161 499 6902</small> <small>T (+44) (0) 1180 500 090 F (+44) (0) 1180 576 066</small> <small>www.coffey.com</small>	
<small>Coffey Geotechnics Limited</small> <small>Registered Office: 1 Northdale Road, Reading, Berkshire RG1 6AN United Kingdom</small> <small>Registered in England No 06332515</small>			
Scale @ A1:	NTS	Drawn:	JU
Checked:		Approved:	
Date:		Date:	15.06.10
Job No.		Drawing No.	
Rev:		Page:	3

chematic)