



**GRACECHURCH STREET  
LONDON EC3**

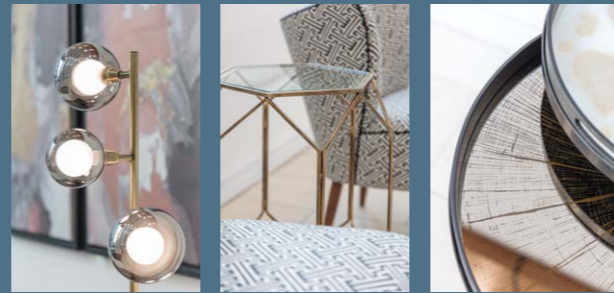


5,939 SQ FT  
HIGH QUALITY 5TH FLOOR  
REFURBISHMENT

[77GRACECHURCHSTREET.COM](http://77GRACECHURCHSTREET.COM)



**NEWLY REFURBISHED,  
CORE CITY OFFICES WITH  
DIRECT ACCESS TO  
LEADENHALL MARKET**

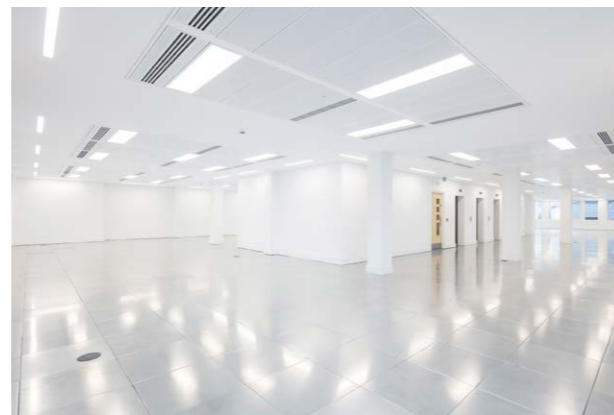


Try the augmented 360° office tour

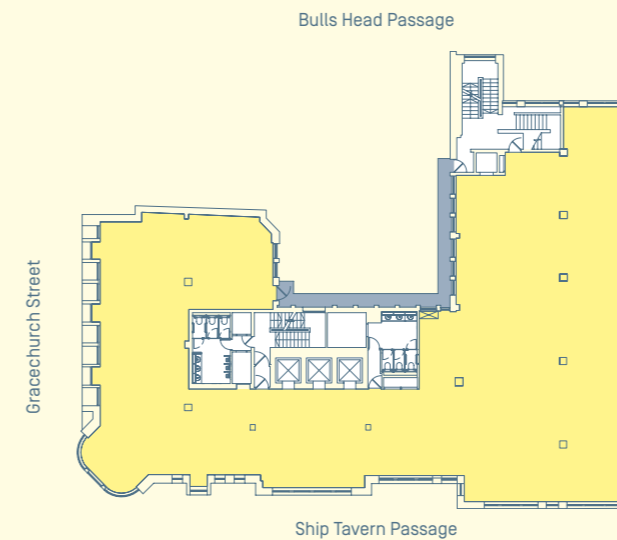


**SPECIFICATION & AMENITIES**

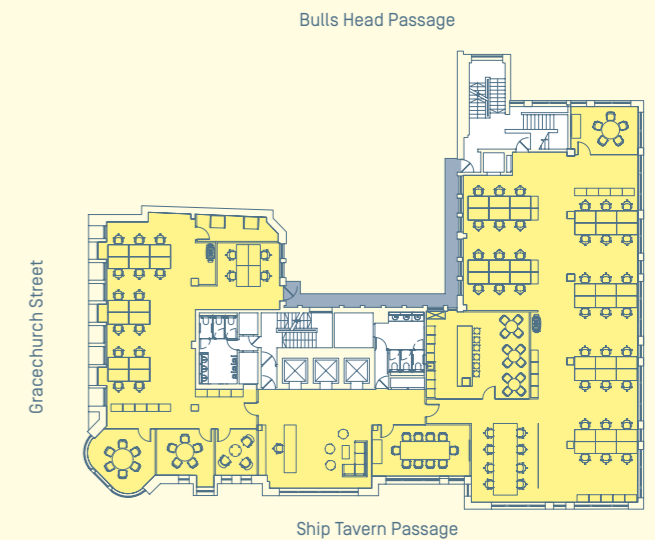
- Double height reception
- Fully accessible raised floor
- 3 x 10 person passenger lifts
- Secure cycle storage
- New on floor WCs
- Shower & locker facilities
- New metal tiled and plasterboard suspended ceiling
- Prime city location
- New VRF air-conditioning
- Adjacent to Leadenhall Market
- LED Lighting
- F45 gym



**5TH FLOOR PLAN** 5,939 sq ft (552 sq m)



**5TH FLOOR SPACE PLAN**



Floor Core  
For indicative purposes only. Not to scale.

Open plan desks	54	Hot desks	8
10 person meeting room	1	Reception	1
6 person meeting room	1	Kitchenette/breakout area	1
5 person meeting rooms	2		
3 person meeting room	1	<b>Total occupancy</b>	<b>54</b>

# A PRIME CITY LOCATION WITH EXCELLENT CONNECTIONS

Gracechurch Street is located between the Bank of England and Lloyd's of London and provides a key link from London Bridge and Monument in the south to Bishopsgate in the north.

The building is well served by a wide range of retail, leisure and restaurant amenities in the immediate locality.



## MONUMENT

  2 minutes 

## BANK

     4 minutes 

## FENCHURCH STREET

 5 minutes 

## CANNON STREET

    5 minutes 

## LIVERPOOL STREET

      8 minutes 

All journey times taken from the building. Source: TfL



For more information or an appointment to view:



**Freddie MacGregor**  
020 7318 7856  
freddie.macgregor@eu.jll.com

**Nick Lines**  
020 7399 5693  
nick.lines@eu.jll.com

**Alice Keogh**  
020 7399 5823  
alice.keogh@eu.jll.com



**Philip McKenna**  
020 7338 4847  
philip.mckenna@realestate.bnpparibas

**Tim Williams**  
020 7338 4848  
tim.williams@realestate.bnpparibas

**Alice Alias**  
020 7338 4412  
alice.alias@realestate.bnpparibas

**77GRACECHURCHSTREET.COM**

JLL for themselves and for the vendors or lessors of this property whose agents they are, give notice that: - a. the particulars are set out as a general outline only for guidance and do not constitute, nor constitute part of, an offer or contract; b. all descriptions, dimensions, references to condition and necessary permissions for use and occupation, and other details are believed to be correct, but any intending purchasers, tenants or third parties should not rely on them as statements or representations of fact but satisfy themselves that they are correct by inspection or otherwise; c. All properties are measured in accordance with the RICS property measurement, 1st Edition May 2015 (incorporating IPMS) unless designated NIA/GIA/GEA, in which case properties are measured in accordance with the RICS Code of Measuring Practice (6th Edition); d. Any images may be computer generated. Any photographs show only certain parts of the property as they appeared at the time they were taken, November 2019.

Designed and produced by Cre8te - 020 3468 5760 - cre8te.london